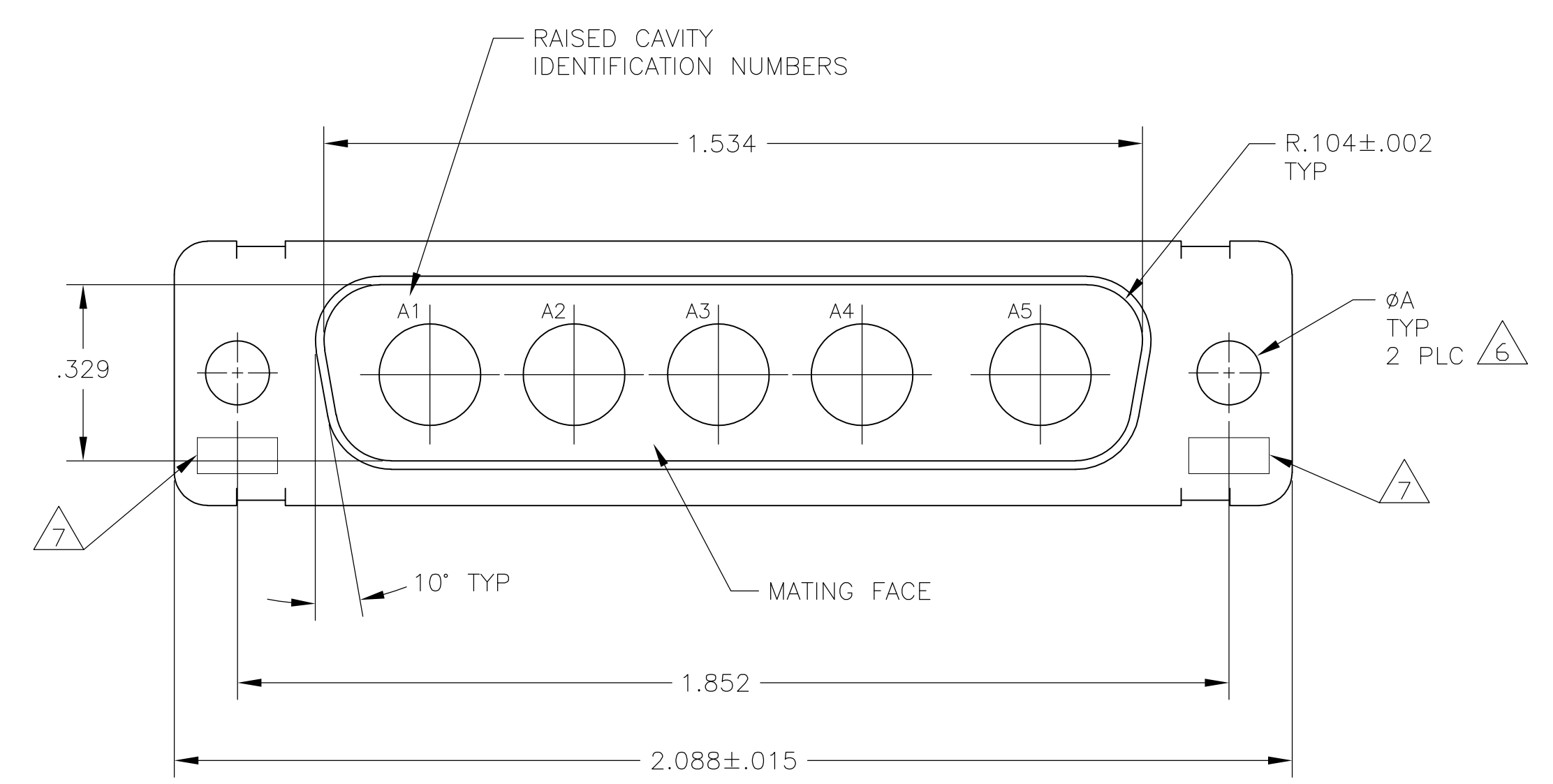
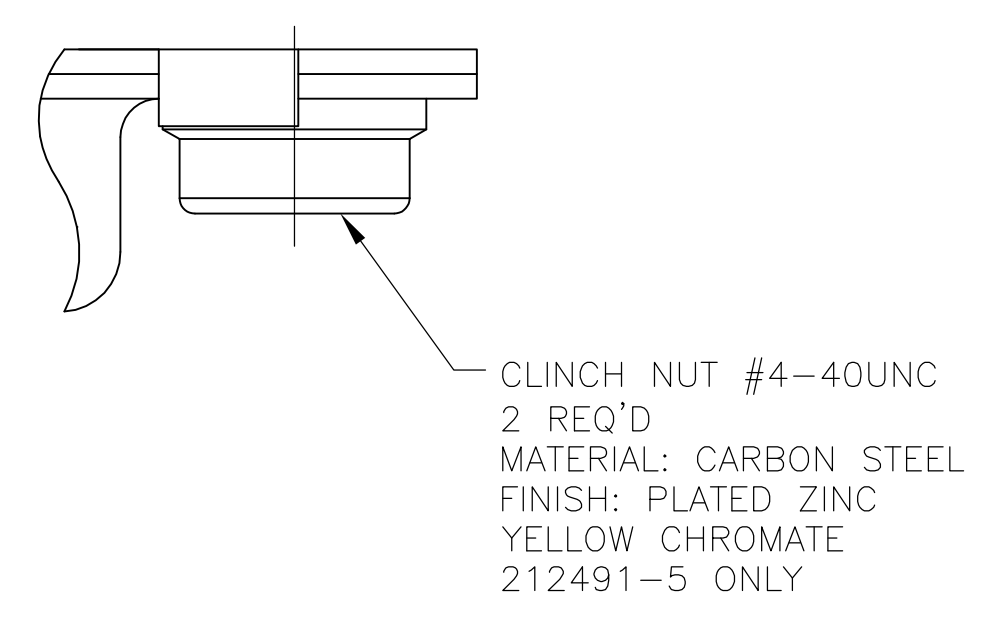
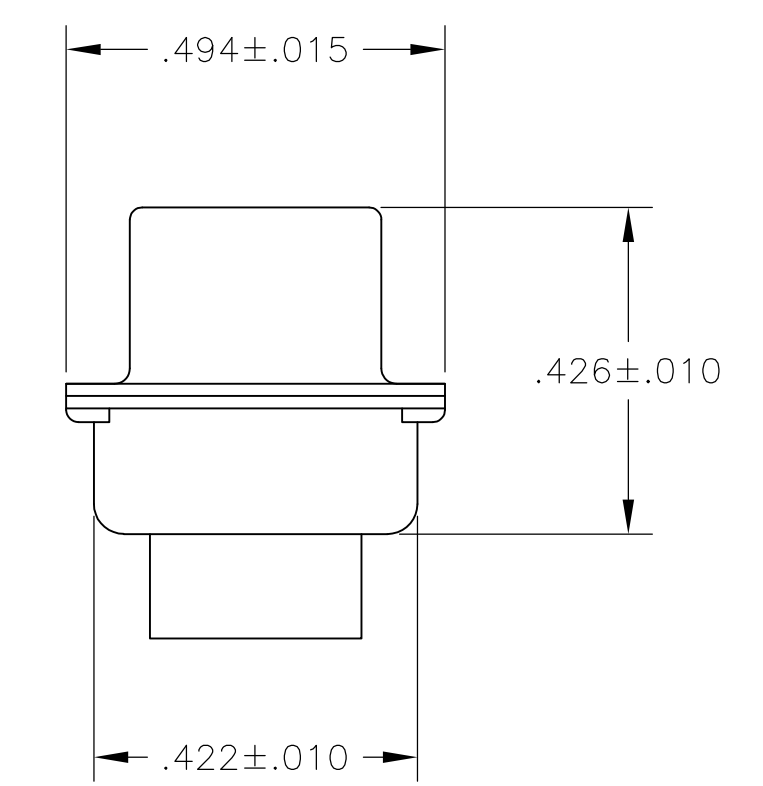
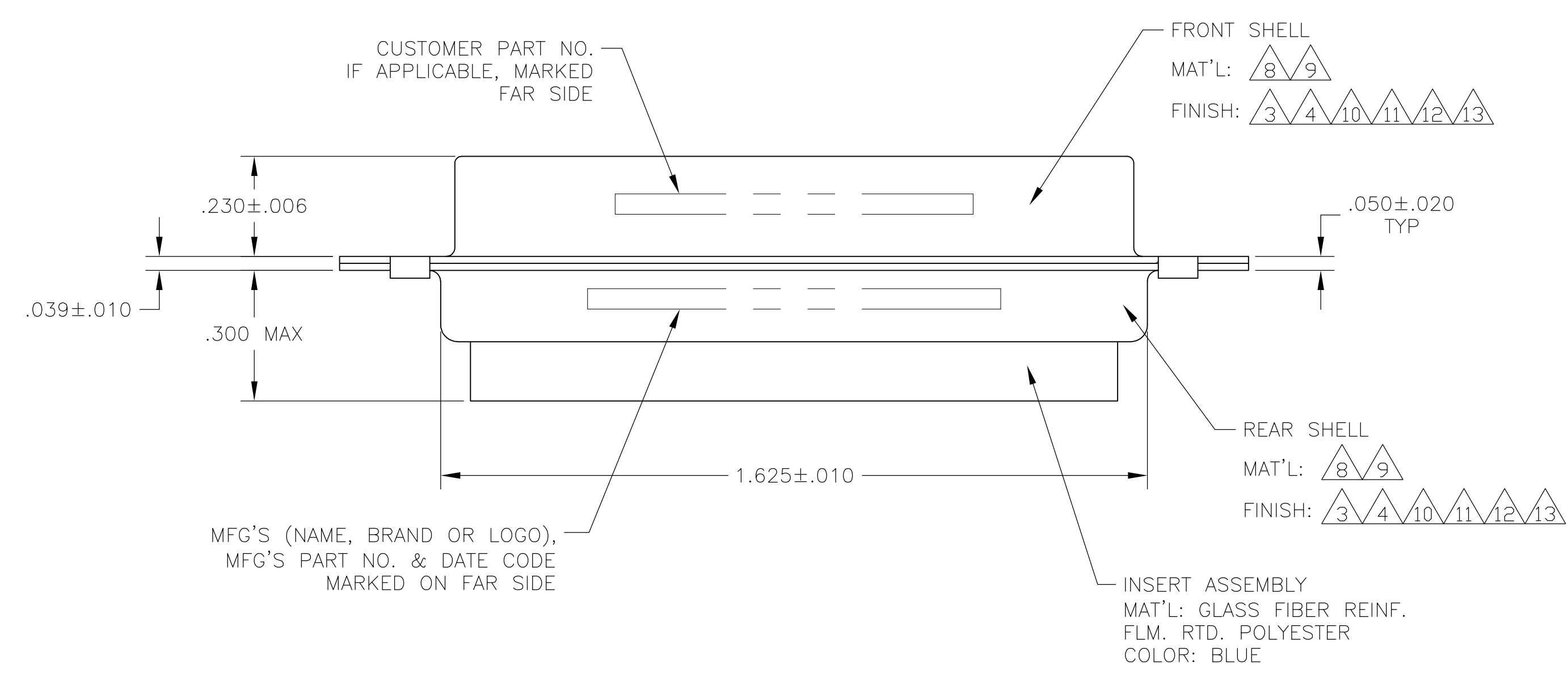


LOC	DIST	REVISIONS				
DF	DO	REV	ECO	DATE	BY	CHK
		N	REV PER ECO 05-014840	20JAN06	BL	CT
		P	REV PER ECO-08-018752	21AUG08	PK	BW



1. THIS PLUG WILL MATE WITH ANY 5C5, SIZE 3 RECEPTACLE IN AMPLIMITE SERIES.
2. USE (5) SIZE 8 POWER, OR COAX PIN CONTACTS. CONSULT PRODUCT ENGINEERING FOR MORE DETAILS.
3. CADMIUM PLATED PER QQ-P-416, TYPE II, CLASS 2.
4. FINISH: TIN PER ASTM-B-545 .000200 MIN THK OVER COPPER PER AMS2418 .000100-.000200 THK OR TIN-LEAD 93/7 .000200 MIN THK OVER COPPER PER AMS2418 .000100-.000200 THK.
5. GROUNDING INDENTS FOR 212491-3, 212491-5, 212491-9, 5-212491-3, & 5-212491-5 (NOT SHOWN ON DWG).
6. 212491-5 & 5-212491-5 SUPPLIED WITH 4-40UNC-2B CLINCH NUTS IN THE MOUNTING HOLE LOCATIONS.
7. UL/CSA DESIGNATION STAMPED IN THIS AREA, OPTIONAL.
8. STEEL PER ASTM-A-109.
9. BRASS PER ASTM-B-36 AND MIL-C-50.
10. FINISH: PLATED GOLD PER MIL-G-45204, TYPE II, GRADE C OVER COPPER PLATE PER MIL-C-14550, CLASS IV.
11. FINISH: TIN PER ASTM-B-545 .000200 MIN THK OVER COPPER PER AMS2418 .000100-.000200 THK.
12. FINISH: BRIGHT TIN PER ASTM-B-545 .000400-.000550 THK OVER COPPER PER AMS2418 .000050 MIN THK.
13. FINISH: ZINC PLATE PER ASTM-B-633 .000200-.000400 THK WITH SUPPLEMENTARY CHROMATE (Cr3+).



NOT RELEASED FOR PRODUCTION

REMARKS	REV	ECO	DATE	BY	CHK
NOT APPLICABLE	6	5, 8, 11	5-212491-5		
NOT APPLICABLE	.120	5, 8, 11	5-212491-3		
NOT APPLICABLE	.120	8, 13	5-212491-1		
NOT APPLICABLE	.120	8, 12	1-212491-0		
NOT APPLICABLE	.120	5, 8, 12	212491-9		
B010942-0015	.120	9, 10	212491-8		
311P405-9P-B-15	.154	9, 10	212491-7		
311P405-9P-B-12	.120	9, 10	212491-6		
NOT APPLICABLE	6	4, 5, 8	212491-5		
97942-645A935H02	.120	3, 8	212491-4		
NOT APPLICABLE	.120	4, 5, 8	212491-3		
NOT APPLICABLE	.120	3, 8	212491-2		
NOT APPLICABLE	.120	3, 8	212491-1		
CUSTOMER PART NO.	φA	REMARKS	PART NO.		

THIS DRAWING IS A CONTROLLED DOCUMENT.		DWN C. THOMAS 04-FEB-88	Tyco Electronics Corporation Harrisburg, PA 17105-3608	
DIMENSIONS: INCHES		CHK A. EMADI 09-FEB-88	NAME PLUG ASSEMBLY AMPLIMITE 5C5 SIZE 3, SERIES 109, COAX MIX	
TOLERANCES UNLESS OTHERWISE SPECIFIED:		APPLD A. FMADI 09-FEB-88	RESTRICTED TO	
0 PLC ± -	1 PLC ± -	PRODUCT SPEC	SIZE A1	CAGE CODE 00779
2 PLC ± -	3 PLC ± .005(0.13)	APPLICATION SPEC	DRAWING NO 212491	SCALE 4:1
4 PLC ± ± 0.30'	ANGLES ± 0.30'	WEIGHT	SHEET 1 OF 1	REV P
MATERIAL	FINISH	CUSTOMER DRAWING		